

OWN THE OUTDOORS

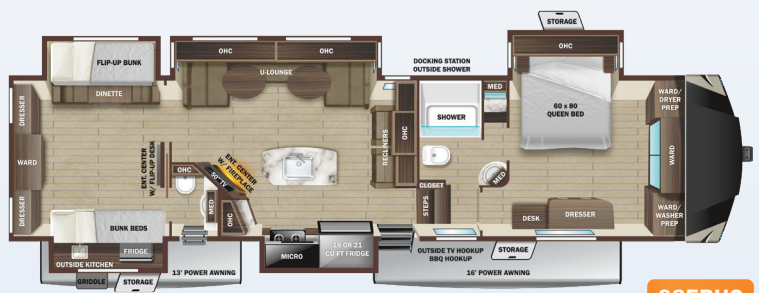
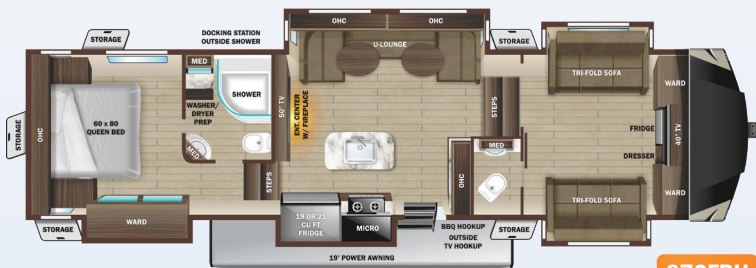
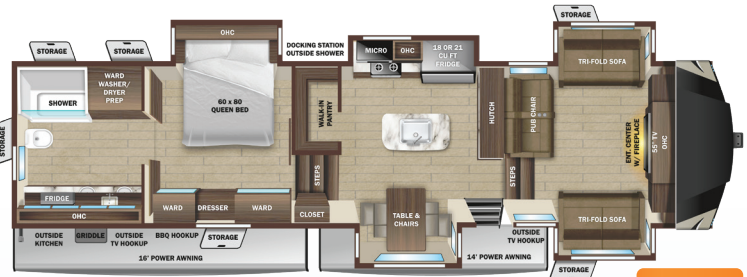
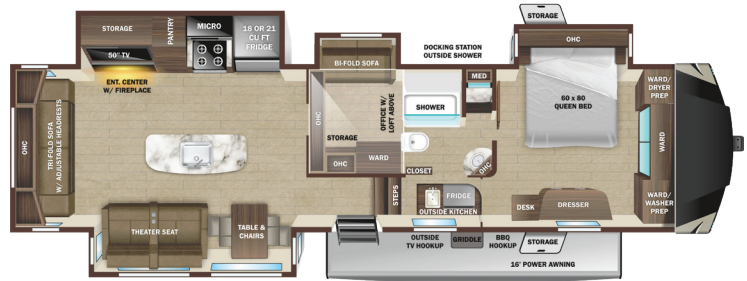
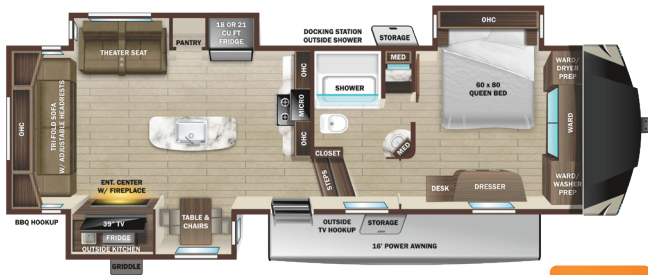


Highland
RIDGE RV

2022 Mesa Ridge 379FBS



FLOORPLANS



STANDARD INTERIOR EQUIPMENT

- » 75 lb. ball bearing drawer guides
- » 60" x 80" residential size queen bed
- » Cable and satellite prep
- » Flush floor slides with residential vinyl flooring
- » Glass shower door
- » Hardwood ceiling soffit
- » Hardwood slideout fascia
- » Hardwood valances
- » Large freestanding oven and 4-burner range
- » LED interior lighting
- » Observation camera prep
- » One-piece fiberglass shower
- » Raised panel hardwood cabinet doors
- » Residential convection microwave
- » Roller day and night shades
- » Table and chairs
- » Theater seating with heat and massage
- » USB ports in master bedroom
- » Wall controlled power vent (kitchen/living room area)
- » Washer/dryer prep
- » Wi-Fi ready

STANDARD EXTERIOR EQUIPMENT

- » 100" wide body frame
- » 2" receiver hitch
- » 3-20 lb. LP bottles
- » 50 amp service
- » ACCU-SLIDE™ slide system (42" deep 4-corner compression)
- » Battery disconnect switch
- » Brass hanger bushings with wet bolts
- » Equa-Flex® axle suspension
- » Exterior grill hookup quick connect port
- » Frameless windows
- » Laminated block foam floor
- » Levelloc™ - 4 or 6 point automatic leveling with JT's Strong Arms®

- » Marine grade exterior speakers (2)
- » PVC roofing membrane (limited lifetime warranty)
- » Rear roof access ladder
- » Self-adjusting electric brakes
- » Spare tire
- » TuffShell™ - vacuum bonded laminated construction, reinforced with heavy-duty fiberglass and welded aluminum frames

EXECUTIVE PACKAGE (MANDATORY)

- » 13,500 BTU A/C with quiet residential return air – bedroom
- » 15,000 BTU A/C with quiet residential return air – main living
- » 76" x 28" entrance door with euro latch and swing shot screen door
- » AM/FM/HDMI/USB/AUX Bluetooth® sound bar stereo with outdoor zoned speakers
- » Cutting board and sink strainer
- » Digital TV antenna
- » Interior convenience center light
- » Keyed-Alike® entry and baggage doors
- » LED HDTV
- » Motion sensor lighting in bedroom and hallway
- » Painted fiberglass front cap with LED Lighting
- » Power awning with LED lighting
- » Quick recovery gas/electric water heater
- » Quick release fresh water drain
- » Residential high-rise faucet with pull-down sprayer
- » Single basin stainless steel under-mount kitchen sink
- » Solar prep
- » Solid swing-down entry steps
- » Solid-surface kitchen countertops
- » Stainless steel appliances
- » TravelLINK™ - Smart RV system that allows for Bluetooth® control of awnings, lighting, slides, heating, cooling, auto-levelers and more
- » USB/12V charging port

FOUR SEASON PACKAGE (MANDATORY)

- » Double insulated baggage doors
- » Ducted heat to underbelly with cold air return
- » Enclosed cable operated gate valves
- » Enclosed exterior docking station with black tank flush
- » Heated and enclosed underbelly
- » High performance furnace
- » R-38 reflective foil insulation in ceiling and underbelly
- » R-9 block foam insulation in sidewalls

OPTIONS

- » 18 cu. ft. RV gas/electric refrigerator
- » 21 cu. ft. residential refrigerator
- » BBQ grill
- » Dual pane windows
- » Folding dinette chairs (2)*
- » Generator prep - LP
- » Heat pump (main/AC)
- » King bed (N/A 284RLS, 376FBH)
- » Main bedroom TV - 32"
- » Observation camera
- » Slideout awning covers
- » Table and theater seats ipo standard u-lounge sofa (374BHS, 376FBH)
- » CURT AirRide pinbox
- » Wall controlled power vent - bathroom
- » Wall controlled power vent - living room (376FBH)
- » Wi-Fi Router

*N/A with u-lounge



We want you to spend less time worrying and more time owning the outdoors. That's why we're proud to back our products with a 3-Year Limited Structural Warranty, plus a 1-Year Limited Manufacturer's Warranty.

SPECIFICATIONS

May Include Estimated Values

	284RLS	314RLS	374BHS	376FBH	371MBH**	378RBS	373RBS	395BHS	379FBS
Unloaded Vehicle Weight (lbs.)	10,305	10,690	12,520	12,225	12,520	12,760	12,875	13,345	12,525
Dry Hitch Weight (lbs.)	1,815	1,985	2,320	2,490	2,245	2,350	2,235	2,645	2,335
Gross Vehicle Weight Rating (GVWR)	12,500	13,250	15,500	15,000	16,470	15,500	15,500	16,250	15,500
Cargo (Gross)	2,195	2,560	2,980	2,775	3,950	2,740	2,625	2,905	2,975
Exterior Length (Pin to Rear)	32' 9"	35' 4"	39' 7"	40' 8"	41' 4"	41' 6"	41' 6"	42' 2"	41' 7"
Exterior Length (Overall)	34' 3"	36' 9"	41' 1"	42' 3"	42' 10"	43' 0"	43' 0"	43' 7"	43' 1"
Exterior Height	12' 10"	13' 0"	13' 2"	13' 1"	13' 1"	12' 10"	13' 1"	12' 11"	13' 1"
Exterior Width	8' 4"	8' 4"	8' 4"	8' 4"	8' 4"	8' 4"	8' 4"	8' 4"	8' 4"
Exterior Width (Slides Out)	14' 10"	14' 10"	14' 10"	13' 9"	14' 1"	14' 3"	14' 9"	13' 8"	14' 9"
Interior Height (Upper Deck)	6' 5"	6' 5"	6' 5"	6' 4"	6' 4"	6' 5"	6' 6"	6' 4"	6' 4"
Interior Height (Overall)	8' 2"	8' 2"	8' 2"	8' 2"	8' 2"	8' 2"	8' 2"	8' 2"	8' 2"
Fresh Water Capacity (Gal.)*	85	85	85	85	85	85	85	85	85
Gray Waste Water Capacity (Gal.)	97	97	132	82	40	80	80	80	114
Black Waste Water Capacity (Gal.)	40	40	80	82	80	40	80	80	80
LP Capacity (lbs.)	60	60	60	60	60	60	60	60	60
Tire Size	16"	16"	16"	16"	16"	16"	16"	16"	16"
Awning Size	16'	16'	11' 6", 15'	19'	16'	16', 14'	16', 14'	13', 16'	20'

*Includes Water Heater

**Specifications, weights, measurements, and capacities above are from model year 2021 and are estimates only for model year 2022. Actual specs, weights, measurements, and capacities may be different for model year 2022 than what is listed above. For the most up-to-date model year 2022 specs, please speak with your local Highland Ridge dealer, visit <http://www.HighlandRidgeRV.com>, and check the yellow sticker on the door of your Highland Ridge RV before purchasing, operating, and towing the RV.

LOCAL DEALER INFO

TO LEARN MORE VISIT
highlandridgerv.com/mesa-ridge-fifth-wheels



Highland Ridge RV – Part of the Jayco Family of Companies



Due to continual research and advances, manufacturer reserves the right to change specifications, design, price, and equipment without notice, and assumes no responsibility for any error in the literature. Some items shown are not included as standard or optional equipment.

OWN THE OUTDOORS



Mesa Ridge
2022 TRAVEL TRAILERS



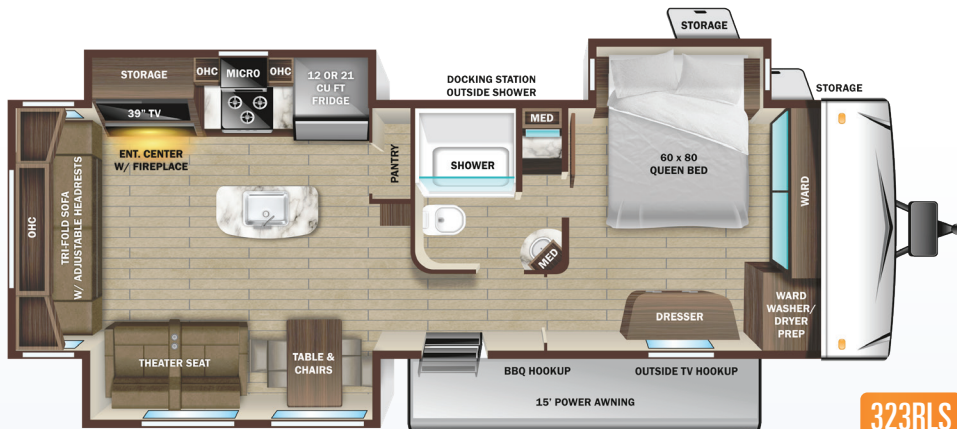
Highland
RIDGE RV



FLOORPLANS



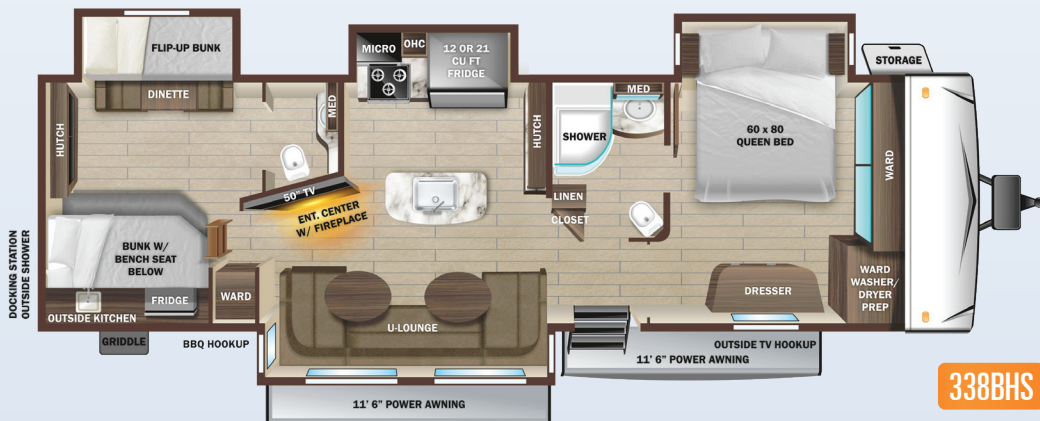
322RLS



323RLS



330BHS



338BHS

STANDARD INTERIOR EQUIPMENT

- » 60" x 80" residential size queen bed with storage below
- » 75 lb. ball bearing drawer guides
- » Cable and satellite prep
- » Flush floor slides with residential vinyl flooring
- » Glass shower door
- » Hardwood cabinet doors
- » Large oven and 3-burner range with flush mount glass cover
- » LED interior lighting
- » Observation camera prep
- » Residential microwave
- » Roller blackout night shades
- » USB ports in master bedroom
- » Wi-Fi ready

STANDARD EXTERIOR EQUIPMENT

- » 100" wide body frame
- » 2-30 lb. LP bottles
- » 4" tube storage bumper
- » 50 amp service
- » ACCU-SLIDE™ slide system (42" deep 4-corner compression)
- » Battery disconnect switch
- » Brass hanger bushings with wet bolts
- » Equa-Flex® axle suspension
- » Exterior grill hookup quick connect port
- » Frameless windows
- » Marine grade exterior speakers (2)
- » Norco™ 5.1 stabilizer system with BAL™ lock arms
- » PVC roofing membrane (limited lifetime warranty)
- » Rear roof access ladder
- » Self-adjusting electric brakes
- » Spare tire
- » TuffShell™ - vacuum bonded laminated construction, reinforced with heavy-duty fiberglass and welded aluminum frames

EXECUTIVE PACKAGE (MANDATORY)

- » 13,500 BTU A/C with quiet residential return air – bedroom
- » 15,000 BTU A/C with quiet residential return air – main living
- » 76" x 28" entrance door with euro latch and swing shot screen door
- » AM/FM/HDMI/USB/AUX Bluetooth® sound bar stereo with outdoor zoned speakers
- » Cutting board and sink strainer
- » Digital TV antenna
- » Interior convenience center light
- » Keyed-Alike® entry and baggage doors
- » LED HDTV
- » Painted fiberglass front cap with LED lighting
- » Power awning with LED lighting
- » Power tongue jack
- » Quick recovery gas/electric water heater
- » Quick release fresh water drain
- » Residential high-rise faucet with pull-down sprayer
- » Single basin stainless steel under-mount kitchen sink
- » Solar prep
- » Solid swing-down entry steps
- » Solid-surface kitchen countertops
- » Stainless steel appliances
- » TravellINK™ - Smart RV system that allows for Bluetooth® control of awnings, lighting, slides, heating, cooling and more
- » USB/12V charging port

FOUR SEASONS PACKAGE (MANDATORY)

- » Double insulated baggage doors
- » Ducted heat to underbelly with cold air return
- » Enclosed cable operated gate valves
- » Enclosed exterior docking station with black tank flush
- » Heated and enclosed underbelly
- » High performance furnace
- » R-38 reflective foil insulation in ceiling and underbelly
- » R-9 block foam insulation in sidewalls

OPTIONS

- » 12 cu. ft. gas/electric refrigerator
- » 21 cu. ft. residential refrigerator
- » BBQ grill
- » Dual pane windows
- » Folding dinette chairs (2)*
- » Heat pump (main A/C)
- » King bed (N/A 330BHS)
- » Observation camera
- » Rear storage tray
- » Slideout awning covers
- » Theater seats and table ipo standard u-lounge sofa (330BHS, 338BHS)
- » Wall controlled power vent - bathroom
- » Wall controlled power vent - kitchen
- » Wi-Fi router

* N/A with u-lounge



We want you to spend less time worrying and more time owning the outdoors. That's why we're proud to back our products with a 3-Year Limited Structural Warranty, plus a 1-Year Limited Manufacturer's Warranty.

SPECIFICATIONS

May Include Estimated Values

	322RLS	323RLS	330BHS	338BHS
Unloaded Vehicle Weight (lbs.)	9,275	8,890	9,790	10,415
Dry Hitch Weight (lbs.)	1,240	1,225	1,260	1,135
Gross Vehicle Weight Rating (GVWR)	11,500	11,400	11,500	12,000
Cargo (Gross)	2,225	2,510	1,710	1,585
Exterior Length (Overall)	37' 10"	37' 10"	39' 4"	39' 11"
Exterior Height	11' 9"	11' 9"	11' 11"	11' 8"
Exterior Width	8' 4"	8' 4"	8' 4"	8' 4"
Exterior Width (Slides Out)	13' 11"	14' 1"	13' 11"	15' 0"
Interior Height (Overall)	7' 0"	7' 0"	7' 0"	7' 0"
Fresh Water Capacity (Gal.)*	56	49	49	49
Gray Waste Water Capacity (Gal.)	114	114	84	66
Black Waste Water Capacity (Gal.)	31	33	33	66
LP Capacity (lbs.)	60	60	60	60
Tire Size	16"	16"	16"	16"
Awning Size	11' 6", 14'	15'	19'	11' 6", 11' 6"

*Includes Water Heater

TO LEARN MORE VISIT
highlandridgerv.com/mesa-ridge-travel-trailers



Highland Ridge RV – Part of the Jayco Family of Companies

LOCAL DEALER INFO



Due to continual research and advances, manufacturer reserves the right to change specifications, design, price, and equipment without notice, and assumes no responsibility for any error in the literature. Some items shown are not included as standard or optional equipment.