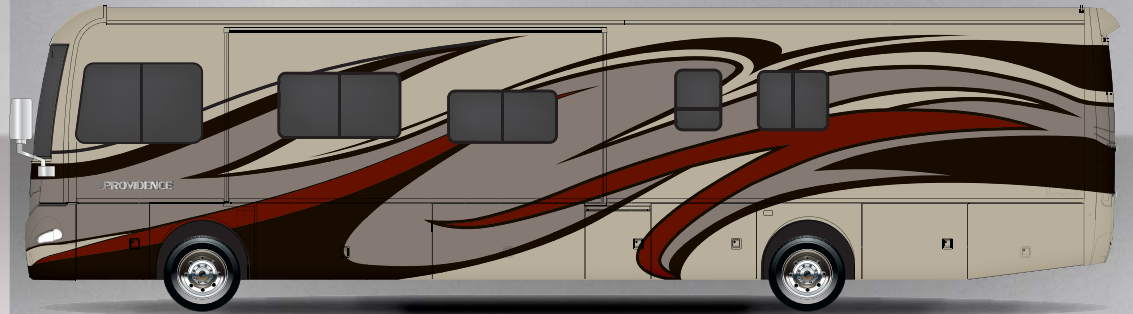
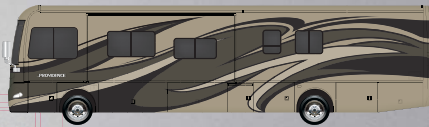


2015

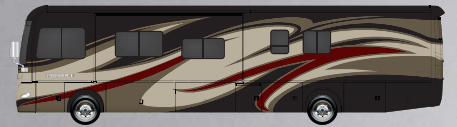
CLASS A DIESEL



CASHMERE CHARM



LINEN LATTE

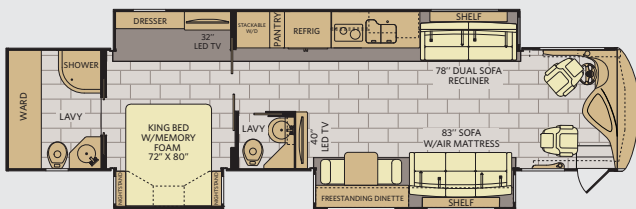


TIMELESS BLACK

TOP FEATURES

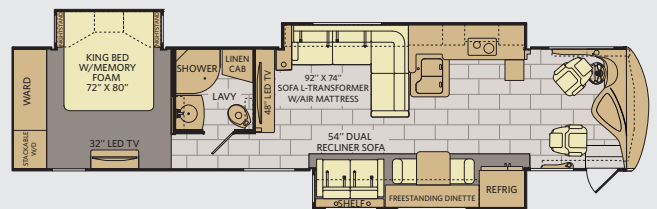
- 450HP Cummins® ISL9
- Aqua-Hot® 400D System Standard
- 2,800-Watt Pure Sine Wave Inverter w/Remote
- 8.0 kW Onan® Quiet Diesel Generator
- 15,000 lb. Hitch Rating
- Sony® LED TVs
- LED Lighting
- High-Gloss 12x24 Porcelain Rectangle Floor Tile
- Hardwood Cabinet Doors/Drawers
- Polished Solid-Surface Countertops
- Double-Roller Shades
- 84" Interior Ceiling Height
- Frameless Flush Mount Windows
- Side Mounted Radiator

42M



AVAILABLE OPTIONS: 087, 093, 107, 635, 830, 856

42P



AVAILABLE OPTIONS: 081, 087, 093, 107, 139, 630, 830, 856

OPTIONS

OPT. 081
60" LED TV
MID-SHIP 42P

OPT. 087
FRONT 32"
LED TV

OPT. 093
EXT. ENT.
CENTER

OPT. 107
DISHWASHER

OPT. 139
LIVING ROOM
FIREPLACE

88" X 44"
U-BENCH DINETTE UL

OPT. 630
U-SHAPED DINETTE / RECLINER

88" X 44"
U-BENCH DINETTE UL

71" SOFABED
W/REMOVABLE ARMS

OPT. 635
U-SHAPED DINETTE / SOFA

OPT. 830
FACING DINETTE

OPT. 856
KING BED
W/AIR
72" X 80"



CHASSIS			
MODELS	42M	42P	
Wheelbase (inches)	302"	302"	
GVWR (lbs) ¹	44,700	44,700	
Front GAWR (lbs) ²	14,700	14,700	
Tag Axle GAWR	10,000	10,000	
Rear GAWR (lbs) ²	20,000	20,000	
GCWR (lbs) ³	59,700	59,700	
Hitch Rating Weight (lbs) [†]	15,000	15,000	
Tongue Weight (lbs) ^{‡,††}	1,500	1,500	
Fuel Capacity (gal)	150	150	

POWER BRIDGE II CHASSIS

Model: Freightliner® XCM Series
Engine: Cummins® ISL9
Transmission: Allison® 3000 MH 6-Speed w/Electronic Shifter

Alternator: Leece Neville 170 Amp
Torque: 1,250 lb-ft @ 1,400 RPM
Horsepower: 450HP



Visit FleetwoodRV.com or find FleetwoodRV tablet apps in the App Store and Google Play.

DIMENSIONS & CAPACITIES			
MODELS	42M	42P	
Overall Length (inches) ⁴	43' 6"	43' 6"	
Overall Height (with A/C)	12' 10"	12' 10"	
Overall Width (maximum) ^{5, 6}	102"	102"	
Interior Height (maximum)	84"	84"	
Interior Width (maximum)	96"	96"	
Patio Awning Size	13'	13'9"	
Interior Storage (cu. ft.)	207	200	
Exterior Storage (cu. ft.)	189	188	
Fresh Water Holding Tank (gal)	100	100	
Grey Water Holding Tank (gal)	60	60	
Black Water Holding Tank (gal)	40	40	



PROVIDENCE 42P SHOWN IN CASHMERE CHARM DÉCOR WITH SPICE WOOD CABINETS

Addendums

- GVWR (Gross Vehicle Weight Rating) is the maximum permissible weight of this fully loaded motorhome. The GVWR is equal to or greater than the sum of the (UVW) unloaded vehicle weight plus the (OCCC) occupant cargo-carrying capacity*.
 - GAWR (Gross Axle Weight Rating) is the maximum permissible loaded weight a specific axle is designed to carry.
 - GCWR (Gross Combined Weight Rating) is the value specified by the motorhome manufacturer as the maximum allowable loaded weight of this motorhome with its towed vehicle. Towing and braking capacities may be different. Refer to Fleetwood and chassis manufacturer's manuals for complete information.
 - Length measured from front bumper to rear bumper (excludes accessories).
 - Excludes safety equipment and awnings.
 - Motorhomes feature a body width over 96" which will restrict your access to certain roads. Before purchasing, you should research any state and/or province road laws which may affect your usage.
 - Tank manufacturer's listed water capacity (WC). Actual propane capacity is 80% of water listing as required by the safety code.
- † The chassis manufacturer recommends the installation of a supplemental brake control system to activate the brakes on the vehicle or trailer you are towing. Hitch receiver ratings expressed are maximum for the hitch receiver installed and may require the purchase of additional equipment that is dependent on the weight of the towed load. Consult with hitch receiver manufacturer for further information.
- * UVW and OCCC are found on the label containing the federal certification tag in each RV.

†† The Minimum Towable Load of this vehicle is the available weight capacity, up to GCWR, when the coach is fully loaded to maximum GVWR. However, if the coach is loaded to something less than maximum GVWR, that extra available weight capacity can be added to your Towable Load. For example, if your coach is loaded to 1000lbs less than maximum GVWR, your Towable Load increases accordingly. Do not exceed the hitch rating weight, GVWR or GCWR.

IMPORTANT—PLEASE READ

Product information, photography and illustrations included in this publication were as accurate as possible at the time of printing. For further product information and changes, please visit our website at www.fleetwoodrv.com or contact your local Fleetwood RV dealer. Prices, materials, design and specifications are subject to change without notice. All weights, fuel, liquid capacities and dimensions are approximate. Fleetwood RV has designed its recreational vehicles to provide a variety of uses for customers. Each vehicle features optimal seating, sleeping, storage and fluid capacities. The user is responsible for selecting the proper combination of loads (i.e., occupants, equipment, fluids, cargo, etc.) to ensure that the vehicle's capacities are not exceeded.

CONTACT US

To locate a dealer near you, visit our website at www.fleetwoodrv.com or call 1-800-322-8216. We can also be contacted at Fleetwood RV Customer Relations, P.O. Box 1007, Decatur, IN 46733.

** All 2015 Fleetwood RV motorhomes include a 1-year emergency roadside assistance membership. For complete info, see your Fleetwood RV dealer.

©2014 Allied Recreation Group Inc. Printed in USA.
 Inventory Control Number PRO15F1_05/14, Model Year 2015, First Edition.

2015

CLASS A DIESEL



ALLIED RECREATION GROUP

